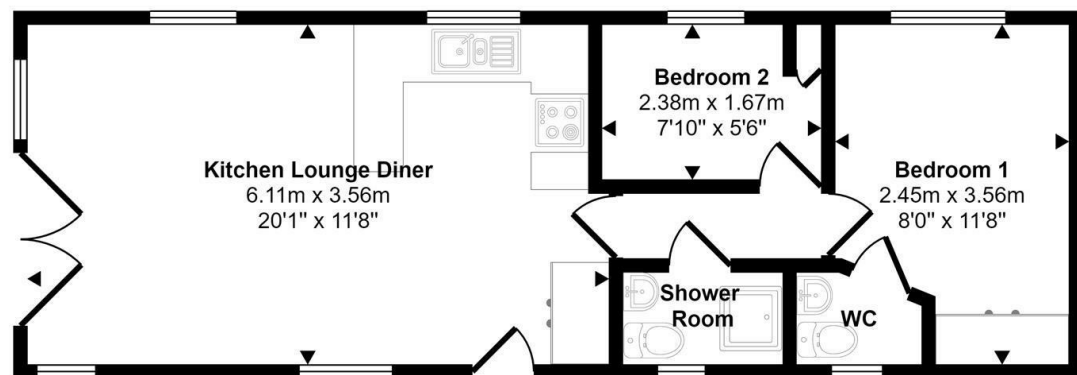


Approx Gross Internal Area
39 sq m / 420 sq ft



Floorplan

This floorplan is only for illustrative purposes and is not to scale. Measurements of rooms, doors, windows, and any items are approximate and no responsibility is taken for any error, omission or mis-statement. Icons of items such as bathroom suites are representations only and may not look like the real items. Made with Made Snappy 360.

VIEWING: By appointment only via the Agents.

TENURE: We are advised Freehold- pitch is rented, site fees apply.

SERVICES: We have not checked or tested any of the services or appliances at the property.

TAX: Band N/A

We would respectfully ask you to call our office before you view this property internally or externally

CFH/ESL/06/23/OK/ESL

FACEBOOK & TWITTER

Be sure to follow us on Twitter: @ WWPProps

<https://www.facebook.com/westwalesproperties/>

WE WOULD LIKE TO POINT OUT THAT OUR PHOTOGRAPHS ARE TAKEN WITH A DIGITAL CAMERA WITH A WIDE ANGLE LENS. These particulars have been prepared in all good faith to give a fair overall view of the property. If there is any point which is of specific importance to you, please check with us first, particularly if travelling some distance to view the property. We would like to point out that the following items are excluded from the sale of the property: Fitted carpets, curtains and blinds, curtain rods and poles, light fittings, sheds, greenhouses - unless specifically specified in the sales particulars. Nothing in these particulars shall be deemed to be a statement that the property is in good structural condition or otherwise. Services, appliances and equipment referred to in the sales details have not been tested, and no warranty can therefore be given. Purchasers should satisfy themselves on such matters prior to purchase. Any areas, measurements or distances are given as a guide only and are not precise. Room sizes should not be relied upon for carpets and furnishings.

COMPUTER-LINKED OFFICES THROUGHOUT WEST WALES and Associated office in Mayfair, London

12 Victoria Place, Haverfordwest, Pembrokeshire, SA61 2LP

EMAIL: haverfordwest@westwalesproperties.co.uk

TELEPHONE: 01437 762626



Plot 5 Tretio Caravan & Camping Park, St. Davids, Haverfordwest, Pembrokeshire, SA62 6DE

- Fantastic Holiday Home
- En-Suite Master Bedroom
- Sited in Pembrokeshire National Park
- Countryside Views
- Two Bedrooms
- Ardennes Swift
- Kitchen Fitted with Appliances
- EPC EXEMPT

Offers In Excess Of £65,000



COMPUTER-LINKED OFFICES THROUGHOUT WEST WALES and Associated office in Mayfair, London



12 Victoria Place, Haverfordwest, Pembrokeshire, SA61 2LP

EMAIL: haverfordwest@westwalesproperties.co.uk TELEPHONE: 01437 762626

The Agent that goes the Extra Mile





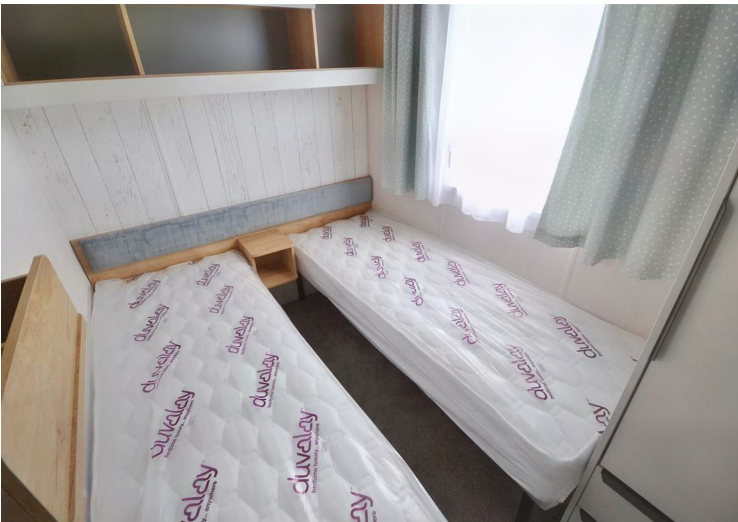
**** VIRTUAL TOUR AVAILABLE **** A new static caravan situated on the St Davids Peninsula, within easy reach of stunning beaches and coves, and the famous Pembrokeshire Coastal Path. This beautifully appointed holiday home would make a fantastic family retreat.

This Swift Ardennes offers spacious and welcoming accommodation, and briefly comprises a stylish and modern open plan kitchen, with a selection of contemporary wall and base units, complimentary work surfaces and integrated fridge/freezer and microwave, lounge/dining area with French doors, a Master Bedroom with fitted wardrobe and vanity unit and En-Suite, a Twin Room, and a Shower Room.

A balcony seating area leads off from the lounge, the pitch enjoys views over the playing field and the countryside beyond.

Tretio Caravan & Camping Park is a 4 star family campsite set in rolling countryside not far from the Cathedral city of St Davids and the Pembrokeshire Coastal path. This well appointed site enjoys far reaching views, a children's play area, playing field, and a reception building.

Tretio is just 1.5 miles from the nearest beach which is dog friendly all year round and the Blue Lagoon which is popular for wild swimming and coasteering. A ten minute drive will take you to Whitesands bay, a famous and beautiful Pembrokeshire surf spot with coastal path access to St Davids Head with its magnificent views in all directions. You can walk through fields and farm tracks from the site to reach the Coastal path within 25 minutes or jump on the local Strumble shuttle bus to explore further afield.



DIRECTIONS

From the Haverfordwest office take the A487 St Davids. Follow the A487 through town and along Nun Street. When leaving town take the left hand turn in the direction of Berea/Aberieddy. Continue down the lane and take the right hand right in the direction of Tretio, where you will find the entrance to the campsite on your left hand side. What3 Words: crumble.kickers.excellent.

See our website www.westwalesproperties.co.uk in our TV channel to view our location videos about the area.